

T491系列工业级片状钽电容

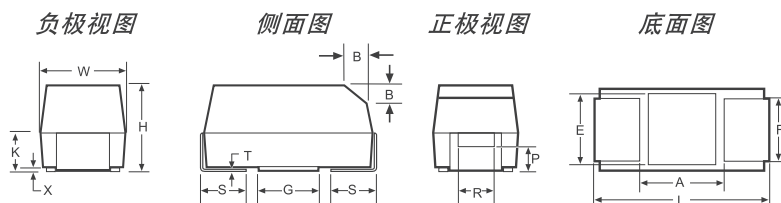
T491 SERIES-Precision Molded Chip



- 符合EIA535BAAC标准要求
- 容值范围0.1 μF ~ 1000 μF
- 可选择镀黄金端头

- 100%浪涌电流测试
- 低ESR
- 新低厚度尺寸

电容器外观图



标准型T491系列 外形尺寸

毫米(英寸)

外形尺寸		L*	W*	H*	K* ± 0.20 $\pm .(008)$	F* ± 0.1 $\pm .(004)$	S* ± 0.3 $\pm .(012)$	B ± 0.15 (Ref) $\pm .(006)$	X (Ref)	P (Ref)	R (Ref)	T (Ref)	A (Ref)	G (Ref)	E (Ref)
KEMET	EIA														
A	3216-18	3.2 ± 0.2 (.126 $\pm .008$)	1.6 ± 0.2 (.063 $\pm .008$)	1.6 ± 0.2 (.063 $\pm .008$)	0.9 (.035)	1.2 (.047)	0.8 (.031)	0.4 (.016)	0.10 ± 0.10 (.004 $\pm .004$)	0.4 (.016)	0.4 (.016)	0.13 (.005)	0.8 (.043)	1.1 (.043)	1.3 (.051)
B	3528-21	3.5 ± 0.2 (.138 $\pm .008$)	2.8 ± 0.2 (.110 $\pm .008$)	1.9 ± 0.2 (.075 $\pm .008$)	1.1 (.043)	2.2 (.087)	0.8 (.031)	0.4 (.016)	0.10 ± 0.10 (.004 $\pm .004$)	0.5 (.020)	1.0 (.039)	1.1 (.005)	1.1 (.043)	1.8 (.071)	2.2 (.087)
C	6032-28	6.0 ± 0.3 (.236 $\pm .012$)	3.2 ± 0.3 (.126 $\pm .012$)	2.5 ± 0.3 (.098 $\pm .012$)	1.4 (.055)	2.2 (.087)	1.3 (.051)	0.5 (.020)	0.10 ± 0.10 (.004 $\pm .004$)	0.9 (.035)	1.0 (.039)	0.13 (.005)	2.5 (.098)	2.8 (.110)	2.4 (.094)
D	7343-31	7.3 ± 0.3 (.287 $\pm .012$)	4.3 ± 0.3 (.169 $\pm .012$)	2.8 ± 0.3 (.110 $\pm .012$)	1.5 (.059)	2.4 (.094)	1.3 (.051)	0.5 (.020)	0.10 ± 0.10 (.004 $\pm .004$)	0.9 (.035)	1.0 (.039)	0.13 (.005)	3.8 (.150)	3.5 (.138)	3.5 (.138)
X	7343-43	7.3 ± 0.3 (.287 $\pm .012$)	4.3 ± 0.3 (.169 $\pm .012$)	4.0 ± 0.3 (.157 $\pm .012$)	2.3 (.091)	2.4 (.094)	1.3 (.051)	0.5 (.020)	0.10 ± 0.10 (.004 $\pm .004$)	1.7 (.067)	1.0 (.039)	0.13 (.005)	3.8 (.150)	3.5** (.138)	3.5** (.138)
E	7260-38	7.3 ± 0.3 (.287 $\pm .012$)	6.0 ± 0.3 (.236 $\pm .012$)	3.6 ± 0.2 (.142 $\pm .008$)	2.3 (.091)	4.1 (.161)	1.3 (.051)	0.5 (.020)	0.10 ± 0.10 (.004 $\pm .004$)	0.9 (.035)	1.0 (.039)	0.13 (.005)	3.8 (.150)	3.5 (.138)	3.5 (.138)

注: 1.公制尺寸 2.(Ref)参考尺寸 *Mil-C-55365/8指定尺寸 **圆衬垫

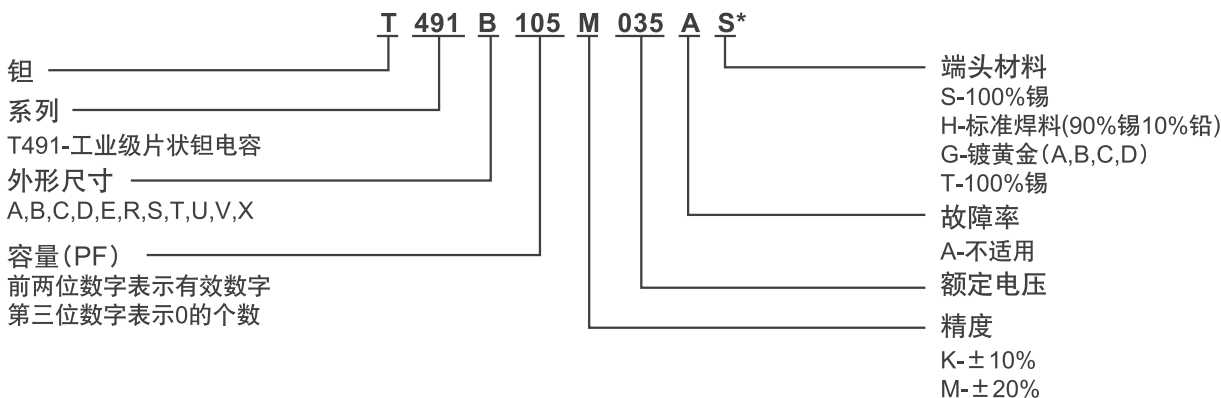
低厚度T491系列 外形尺寸

毫米(英寸)

外形尺寸		L	W	H Min.	K Min.	F ± 0.1	S ± 0.3	X (Ref)	T (Ref)	A (Ref)	G (Ref)	E (Ref)
KEMET	EIA											
R	2012-12	2.0 ± 0.2 (.079 $\pm .008$)	1.3 ± 0.2 (.051 $\pm .008$)	1.2 (.047)	0.3 (.012)	0.9 (.035)	0.5 (.020)	0.05 (.002)	0.13 (.005)	0.8 (.031)	0.5 (.020)	0.8 (.031)
S	3216-12	3.2 ± 0.2 (.126 $\pm .008$)	1.6 ± 0.2 (.063 $\pm .008$)	1.2 (.047)	0.3 (.012)	1.2 (.047)	0.8 (.031)	0.05 (.002)	0.13 (.005)	0.8 (.031)	1.1 (.043)	1.3 (.051)
T	3528-12	3.5 ± 0.2 (.138 $\pm .008$)	2.8 ± 0.2 (.110 $\pm .008$)	1.2 (.047)	0.3 (.012)	2.2 (.087)	0.8 (.031)	0.05 (.002)	0.13 (.005)	1.1 (.043)	1.8 (.071)	2.2 (.087)
U	6032-15	6.0 ± 0.3 (.236 $\pm .012$)	3.2 ± 0.3 (.126 $\pm .012$)	1.5 (.059)	0.5 (.020)	2.2 (.087)	1.3 (.051)	0.05 (.002)	0.13 (.005)	2.5 (.098)	2.8 (.110)	2.4 (.094)
V	7343-20	7.3 ± 0.3 (.287 $\pm .012$)	4.3 ± 0.3 (.169 $\pm .012$)	2.0 (.079)	0.9 (.035)	2.4 (.094)	1.3 (.051)	0.05 (.002)	0.13 (.005)	3.8 (.150)	3.5 (.138)	3.5 (.138)

注: 1.公制尺寸 2.(Ref)参考尺寸

T491系列 型号说明



*: 有关无铅产品的详细情况, 请登录www.kemet.com查询或联系KEMET代理商。

T491 片状钽电容容量表

标准容 值

扩展容 值

容 值		额定电压 @ +85°C(V)								容 值		额定电压 @ +85°C(V)									
μF	代码	4	6	10	16	20	25	35	50	μF	代码	3	4	6	10	16	20	25	35	50	
0.10	104							A	A	0.10	104										
0.15	154							A	B	0.15	154										A
0.22	224							A	B	0.22	224										
0.33	334						A	A	B	0.33	334										
0.47	474						A	A/B	C	0.47	474										B
0.68	684					A	A	B	C	0.68	684								A	B	
1.0	105				A	S/A	B	B	C	1.0	105						R	A	A	V	
1.5	155			A	A	S/A	B	B/C	D	1.5	155							A		C	
2.2	225		A	A	S/A	A/B	B/C	C	D	2.2	225			R		R			B	C	
3.3	335	A	A	S/A	A/B	B/T	C	C	D	3.3	335				R		A	B	B		
4.7	475	A	S/A	A/B	A/B/T	B/C	C	C/D	D	4.7	475				R/S		A	B			
6.8	685	S/A	A/B	A/B/T	B/C	C/U	C	D	X	6.8	685			R/S	S	A	B	B	C	D	
10.0	106	A/B	A/B/T	B/C	B/C/U	C/U	D	D		10.0	106		R/S	S	S/T/A	T/A	B	C	C/V	X	
15.0	156	A/B/T	B/C	B/C/U	C/U	D	D	X		15.0	156		S	S/T/A	T/A	B	C	C	D	X	
22.0	226	B/C	B/C/U	C/U	C/D	D/V	D	X		22.0	226		S/T/A	T/A	T/A/B	U/B	C	C/V	D		
33.0	336	B/C/U	C/U	C/D/V	D	D	X			33.0	336	A	T/A	T/A/B	U/B	U/C	C/V	D	X		
47.0	476	C/U	C/D	D/V	D/V					47.0	476		T/A/B	U/B/A	U/B/C	C	D	D/X	X		
68.0	686	C/D	D	D/V		X				68.0	686		U/B/A	U/B/A	U/C	V/D	D	X			
100.0	107	D	D/V	D	X					100.0	107		T/U B/C/A	B/U/C	V/C	V/D	X				
150.0	157	D/V	D	X						150.0	157		B/C	V/C	V/C/D	D/X					
220.0	227		X							220.0	227		V	C/V/D	D/X						
330.0	337									330.0	337		V/C/D	D/X	D/X						
470.0	477									470.0	477		D/X	D/X	E						
680.0	687									680.0	687		D/X	E							
1000.0	108									1000.0	108		X/E								

注：在没有尺寸限制的情况下优先考虑选用标准容值系列。
 在低阻抗应用中，标准容值系列比扩展容值系列具有更高的可靠性。

T491 系列工业级片状钽电容

T491 SERIES-Precision Molded Chip



型号规格 & 电气性能一览表

容量 μF	外形 尺寸	型号规格	DC漏电流 μA@25°C Max	DF %@25°C 120 Hz Max	ESR Ω@25°C 100 KHz Max
3 Volt Rating at +85°C (2 Volt Rating at +125°C)					
#33.0	*A	T491A336(1)003AS	1.0	6.0	4.0
4 Volt Rating at +85°C (2.7 Volt Rating at +125°C)					
3.3	A	T491A335(1)004AS	0.5	6.0	8.0
4.7	A	T491A475(1)004AS	0.5	6.0	8.0
6.8	A	T491A685(1)004AS	0.5	6.0	6.0
10.0	B	T491B106(1)004AS	0.5	6.0	15.0
10.0	A	T491A106(1)004AS	0.5	6.0	8.0
#10.0	*S	T491S106(1)004AS	0.5	6.0	15.0
#10.0	*R	T491R106M004AS	0.5	8.0	10.0
15.0	B	T491B156(1)004AS	0.6	6.0	3.5
15.0	A	T491A156(1)004AS	0.6	6.0	4.0
15.0	T	T491T156(1)004AS	0.6	6.0	5.0
#15.0	*S	T491S156M004AS	0.6	10.0	15.0
22.0	C	T491C226(1)004AS	0.9	6.0	1.8
22.0	B	T491B226(1)004AS	0.9	6.0	3.5
#22.0	*A	T491A226(1)004AS	0.9	6.0	4.0
#22.0	*T	T491T226(1)004AS	0.9	6.0	5.0
22.0	*S	T491S226M004AS	0.9	10.0	10.0
33.0	C	T491C336(1)004AS	1.3	6.0	1.8
33.0	U	T491U336(1)004AS	1.3	6.0	1.8
33.0	B	T491B336(1)004AS	1.3	6.0	3.5
#33.0	*A	T491A336(1)004AS	1.3	6.0	4.0
#33.0	*T	T491T336M004AS	1.3	8.0	5.0
47.0	C	T491C476(1)004AS	1.9	6.0	1.8
47.0	*U	T491U476(1)004AS	1.9	6.0	1.8
#47.0	*B	T491B476(1)004AS	1.9	6.0	3.0
#47.0	*A	T491A476M004AS	1.9	12.0	2.5
#47.0	*T	T491T476M004AS	1.9	12.0	6.0
68.0	D	T491D686(1)004AS	2.7	6.0	0.8
68.0	C	T491C686(1)004AS	2.7	6.0	1.6
#68.0	*U	T491U686(1)004AS	2.7	6.0	1.8
#68.0	*B	T491B686(1)004AS	2.7	6.0	3.5
#68.0	*A	T491A686(1)004AS	2.8	30.0	4.0
100.0	D	T491D107(1)004AS	4.0	8.0	0.8
#100.0	*C	T491C107(1)004AS	4.0	8.0	1.2
#100.0	*U	T491U107(1)004AS	4.0	10.0	1.8
#100.0	*B	T491B107M004AS	4.0	8.0	4.0
#100.0	*A	T491A107M004AS	4.0	30.0	4.0
†100.0	*T	T491T107M004AS	4.0	30.0	5.0
150.0	D	T491D157(1)004AS	6.0	8.0	0.8
150.0	V	T491V157(1)004AS	6.0	8.0	0.7
#150.0	*C	T491C157(1)004AS	6.0	8.0	1.2
†150.0	*B	T491B157M004AS	6.0	12.0	2.0
#220.0	*V	T491V227(1)004AS	8.8	8.0	0.7
330.0	*D	T491D337(1)004AS	13.2	8.0	0.7
†330.0	*V	T491V337M004AS	13.2	12.0	0.7
#330.0	*C	T491C337(1)004AS	13.2	10.0	1.2
#470.0	*X	T491X477(1)004AS	18.8	8.0	0.5
#470.0	*D	T491D477(1)004AS	18.8	8.0	0.8
#680.0	*X	T491X687M004AS	27.2	12.0	0.5
#680.0	*D	T491D687M004AS	27.2	12.0	0.5
#1000.0	*X	T491X108(1)004AS	40.0	15.0	0.5
#1000.0	*E	T491E108M004AS	40.0	15.0	0.2
**6 Volt Rating at +85°C (4 Volt Rating at +125°C)					
2.2	A	T491A225(1)006AS	0.5	6.0	8.0
#2.2	R	T491R225(1)006AS	0.5	6.0	25.0
3.3	A	T491A335(1)006AS	0.5	6.0	8.0
4.7	A	T491A475(1)006AS	0.5	6.0	6.0
4.7	S	T491S475(1)006AS	0.5	6.0	15.0
6.8	B	T491B685(1)006AS	0.5	6.0	3.5
6.8	A	T491A685(1)006AS	0.5	6.0	6.0
#6.8	*S	T491S685(1)006AS	0.5	6.0	15.0
#6.8	*R	T491R685(1)006AS	0.5	8.0	15.0
10.0	B	T491B106(1)006AS	0.6	6.0	3.5
10.0	A	T491A106(1)006AS	0.6	6.0	4.0
10.0	T	T491T106(1)006AS	0.6	6.0	5.0
#10.0	*S	T491S106M006AS	0.6	10.0	15.0
#10.0	*R	T491R106M006AS	0.6	8.0	10.0
15.0	C	T491C156(1)006AS	0.9	6.0	1.8
15.0	B	T491B156(1)006AS	0.9	6.0	3.5
#15.0	*A	T491A156(1)006AS	0.9	6.0	4.0
#15.0	*T	T491T156(1)006AS	0.9	6.0	5.0
#15.0	*S	T491S156M006AS	0.9	15.0	10.0
22.0	C	T491C226(1)006AS	1.4	6.0	1.8
22.0	U	T491U226(1)006AS	1.4	6.0	1.8
22.0	B	T491B226(1)006AS	1.4	6.0	3.5
#22.0	*A	T491A226(1)006AS	1.4	6.0	4.0
#22.0	*T	T491T226M006AS	1.4	8.0	5.0
33.0	C	T491C336(1)006AS	2.0	6.0	1.8
33.0	U	T491U336(1)006AS	2.0	6.0	1.8
#33.0	*B	T491B336(1)006AS	2.0	6.0	3.0
#33.0	*A	T491A336(1)006AS	2.0	12.0	2.5
#33.0	*T	T491T336M006AS	2.0	12.0	6.0
47.0	D	T491D476(1)006AS	2.9	6.0	0.8
47.0	C	T491C476(1)006AS	2.9	6.0	1.6
#47.0	*U	T491U476(1)006AS	2.9	6.0	1.8
#47.0	*B	T491B476(1)006AS	2.9	6.0	3.5
†47.0	*A	T491A476M006AS	3.0	12.0	3.5
68.0	D	T491D686(1)006AS	4.1	6.0	0.8
#68.0	*C	T491C686(1)006AS	4.1	6.0	1.2
#68.0	*U	T491U686(1)006AS	4.1	10.0	1.8
#68.0	*B	T491B686(1)006AS	4.1	8.0	1.0
100.0	D	T491D107(1)006AS	6.0	8.0	0.8
100.0	V	T491V107(1)006AS	6.0	8.0	0.7
#100.0	*C	T491C107(1)006AS	6.0	8.0	1.2
#100.0	*U	T491U107M006AS	6.0	10.0	1.8
#100.0	*B	T491B107M006AS	6.3	15.0	3.0
150.0	D	T491D157(1)006AS	9.0	8.0	0.7
#150.0	*C	T491C157M006AS	9.0	8.0	1.2
#150.0	*V	T491V157(1)006AS	9.0	8.0	0.7
220.0	X	T491X227(1)006AS	13.2	8.0	0.7
#220.0	*D	T491D227(1)006AS	13.2	8.0	0.7
#220.0	*C	T491C227M006AS	13.2	10.0	1.2
#220.0	*U	T491U227M006AS	13.2	12.0	0.7
330.0	*X	T491X337(1)006AS	19.8	8.0	0.5
330.0	*D	T491D337(1)006AS	19.8	8.0	0.5
470.0	*X	T491X477(1)006AS	28.2	10.0	0.5
470.0	*D	T491D477M006AS	28.2	12.0	0.5
680.0	*E	T491E687M006AS	40.8	12.0	0.5

容量 μF	外形 尺寸	型号规格	DC漏电流 μA@25°C Max	DF %@25°C 120 Hz Max	ESR Ω@25°C 100 KHz Max
10 Volt Rating at +85°C (7 Volt Rating at +125°C)					
1.5	A	T491A155(1)010AS	0.5	6.0	8.0
2.2	A	T491A225(1)010AS	0.5	6.0	8.0
3.3	A	T491A335(1)010AS	0.5	6.0	6.0
3.3	S	T491S335(1)010AS	0.5	6.0	15.0
#3.3	*R	T491R335(1)010AS	0.3	8.0	15.0
4.7	B	T491B475(1)010AS	0.5	15.0	3.5
4.7	A	T491A475(1)010AS	0.5	6.0	6.0
#4.7	*S	T491S475(1)010AS	0.5	6.0	15.0
#4.7	*R	T491R475M010AS	0.5	8.0	10.0
6.8	B	T491B685(1)010AS	0.7	6.0	3.5
6.8	A	T491A685(1)010AS	0.7	6.0	6.0
6.8	T	T491T685(1)010AS	0.7	6.0	5.0
#6.8	*S	T491S685M010AS	0.7	10.0	15.0
10.0	C	T491C106(1)010AS	1.0	6.0	1.8
10.0	B	T491B106(1)010AS	1.0	6.0	3.5
#10.0	*A	T491A106(1)010AS	1.0	6.0	4.0
#10.0	*T	T491T106(1)010AS	1.0	6.0	5.0
#10.0	*S	T491S106M010AS	1.0	10.0	15.0
15.0	C	T491C156(1)010AS	1.5	6.0	1.8
15.0	U	T491U156(1)010AS	1.5	6.0	1.8
15.0	B	T491B156(1)010AS	1.5	6.0	3.5
#15.0	*A	T491A156(1)010AS	1.5	8.0	6.0
#15.0	*T	T491T156M010AS	1.5	8.0	5.0
22.0	C	T491C226(1)010AS	2.2	6.0	1.8
22.0	U	T491U226(1)010AS	2.2	6.0	1.8
#22.0	*B	T491B226(1)010AS	2.2	6.0	3.0
#22.0	*A	T491A226M010AS	2.2	10.0	6.0
#22.0	*T	T491T226M010AS	2.2	12.0	8.0
33.0	D	T491D336(1)010AS	3.3	6.0	0.8
33.0	V	T491V336(1)010AS	3.3	6.0	0.7
33.0	C	T491C336(1)010AS	3.3	6.0	1.6
#33.0	*U	T491U336(1)010AS	3.3	6.0	1.8
#33.0	*B	T491B336(1)010AS	3.3	6.0	3.5
47.0	D	T491D476(1)010AS	4.7	6.0	0.8
47.0	V	T491V476(1)010AS	4.7	6.0	0.7
#47.0	*C	T491C476(1)010AS	4.7	6.0	1.2
#47.0	*U	T491U476(1)010AS	4.7	10.0	2.2
#47.0	*B	T491B476M010AS	4.7	8.0	1.0
68.0	D	T491D686(1)010AS	6.8	6.0	0.8
68.0	V	T491V686(1)010AS	6.8	6.0	0.7
#68.0	*C	T491C686(1)010AS	6.8	6.0	1.2
#68.0	*U	T491U686M010AS	6.8	10.0	1.8
#68.0	*B	T491B686M010AS	6.8	10.0	3.0
100.0	D	T491D107(1)010AS	10.0	8.0	0.7
#100.0	*C	T491C107(1)010AS	10.0	8.0	1.2
#100.0	*V	T491V107(1)010AS	10.0	8.0	0.7
150.0	X	T491X157(1)010AS	15.0	8.0	0.7
#150.0	*D	T491D157(1)010AS	15.0	8.0	0.7
#150.0	*C	T491C157(1)010AS	15.0	10.0	1.2
#150.0	*V	T491V157M010AS	15.0	8.0	0.7
#220.0	*X	T491X227(1)010AS	22.0	8.0	0.5
#220.0	*D	T491D227(1)010AS	22.0	8.0	0.5
#220.0	*V	T491V227(1)010AS	22.0	12.0	0.7
#330.0	*D	T491D337M010AS	33.0	10.0	0.5
#330.0	*X	T491X337(1)010AS	33.0	10.0	0.5
#470.0	*E	T491E477M010AS	47.0	12.0	0.5
16 Volt Rating at +85°C (10 Volt Rating at +125°C)					
1.0	A	T491A105(1)016AS	0.5	4.0	10.0
1.5	A	T491A155(1)016AS	0.5	6.0	8.0
2.2	A	T491A225(1)016AS	0.5	6.0	6.

型号规格&电气性能一览表

容量 μF	外形 尺寸	型号规格	DC漏电流 μA@25°C Max	DF %@25°C 120 Hz Max	ESR Ω@25°C 100 KHz Max
20 Volt Rating at +85°C (13 Volt Rating at +125°C)					
0.68	A	T491A684(1)020AS	0.5	4.0	12.0
1.0	A	T491A105(1)020AS	0.5	4.0	10.0
1.0	S	T491S105(1)020AS	0.5	6.0	18.0
#1.0	R	T491R105M020AS	0.5	6.0	20.0
1.5	A	T491A155(1)020AS	0.5	6.0	8.0
1.5	S	T491S155(1)020AS	0.5	6.0	15.0
2.2	B	T491B225(1)020AS	0.5	6.0	3.5
2.2	A	T491A225(1)020AS	0.5	6.0	7.0
3.3	B	T491B335(1)020AS	0.7	6.0	3.5
#3.3	*A	T491A335(1)020AS	0.7	6.0	7.0
3.3	*T	T491T335(1)020AS	0.7	6.0	5.0
4.7	C	T491C475(1)020AS	1.0	6.0	2.4
4.7	B	T491B475(1)020AS	1.0	6.0	3.5
#4.7	*A	T491A475M020AS	1.0	8.0	6.0
6.8	C	T491C685(1)020AS	1.4	6.0	1.9
6.8	U	T491U685(1)020AS	1.4	6.0	1.9
#6.8	*B	T491B685(1)020AS	1.4	6.0	3.5
10.0	C	T491C106(1)020AS	2.0	6.0	1.8
10.0	U	T491U106(1)020AS	2.0	6.0	1.8
#10.0	*B	T491B106(1)020AS	2.0	6.0	3.0
15.0	D	T491D156(1)020AS	3.0	6.0	1.0
15.0	*C	T491C156(1)020AS	3.0	6.0	1.7
22.0	D	T491D226(1)020AS	4.4	6.0	0.8
22.0	V	T491V226(1)020AS	4.4	6.0	0.7
#22.0	*C	T491C226(1)020AS	4.4	6.0	1.2
33.0	D	T491D336(1)020AS	6.6	6.0	0.8
#33.0	*C	T491C336M020AS	6.6	6.0	1.2
†33.0	*V	T491V336M020AS	6.6	8.0	0.7
47.0	*D	T491D476(1)020AS	9.4	6.0	0.7
68.0	X	T491X686(1)020AS	13.6	6.0	0.7
#68.0	*D	T491D686(1)020AS	13.6	8.0	0.7
#100.0	*X	T491X107(1)020AS	20.0	8.0	0.5
25 Volt Rating at +85°C (13 Volt Rating at +125°C)					
0.33	A	T491A334(1)025AS	0.5	4.0	15.0
0.47	A	T491A474(1)025AS	0.5	4.0	14.0
0.68	A	T491A684(1)025AS	0.5	4.0	10.0
1.0	B	T491B105(1)025AS	0.5	4.0	5.0
1.0	*A	T491A105(1)025AS	0.5	4.0	8.0
1.5	B	T491B155(1)025AS	0.5	6.0	5.0
1.5	*A	T491A155(1)025AS	0.5	6.0	10.0
2.2	C	T491C225(1)025AS	0.6	6.0	3.5
2.2	B	T491B225(1)025AS	0.6	6.0	4.5
3.3	C	T491C335(1)025AS	0.9	6.0	2.5
3.3	*B	T491B335(1)025AS	0.9	6.0	3.5
4.7	C	T491C475(1)025AS	1.2	6.0	2.4
#4.7	*B	T491B475M025AS	1.2	6.0	1.5
6.8	C	T491C685(1)025AS	1.7	6.0	1.9
6.8	B	T491B685(1)025AS	1.7	8.0	3.0
10.0	D	T491D106(1)025AS	2.5	6.0	1.0
10.0	*C	T491C106(1)025AS	2.5	6.0	1.5
15.0	D	T491D156(1)025AS	3.8	6.0	1.0
#15.0	*C	T491C156(1)025AS	3.8	6.0	1.5
22.0	D	T491D226(1)025AS	5.5	6.0	0.8
22.0	*C	T491C226(1)025AS	5.5	8.0	1.5
22.0	*V	T491V226(1)025AS	5.5	6.0	0.7
33.0	X	T491X336(1)025AS	8.3	6.0	0.7
#33.0	*D	T491D336(1)025AS	8.3	6.0	0.7
#47.0	*X	T491X476(1)025AS	11.8	6.0	0.7
†47.0	*D	T491D476(1)025AS	11.8	10.0	0.7
†68.0	*X	T491X686M025AS	17.0	8.0	0.7

容量 μF	外形 尺寸	型号规格	DC漏电流 μA@25°C Max	DF %@25°C 120 Hz Max	ESR Ω@25°C 100 KHz Max
35 Volt Rating at +85°C (23 Volt Rating at +125°C)					
0.10	A	T491A104(1)035AS	0.5	4.0	20.0
0.15	A	T491A154(1)035AS	0.5	4.0	19.0
0.22	A	T491A224(1)035AS	0.5	4.0	18.0
0.33	A	T491A334(1)035AS	0.5	4.0	15.0
0.47	B	T491B474(1)035AS	0.5	4.0	8.0
0.47	A	T491A474(1)035AS	0.5	4.0	14.0
0.68	B	T491B684(1)035AS	0.5	4.0	6.5
0.68	*A	T491A684(1)035AS	0.5	4.0	10.0
1.0	B	T491B105(1)035AS	0.5	4.0	5.0
1.0	*A	T491A105(1)035AS	0.5	4.0	10.0
1.5	C	T491C155(1)035AS	0.5	6.0	4.5
1.5	B	T491B155(1)035AS	0.5	6.0	5.0
2.2	C	T491C225(1)035AS	0.8	6.0	3.5
2.2	*B	T491B225(1)035AS	0.8	6.0	4.0
3.3	C	T491C335(1)035AS	1.2	6.0	2.5
#3.3	*B	T491B335M035AS	1.2	6.0	3.5
4.7	D	T491D475(1)035AS	1.7	6.0	1.5
4.7	C	T491C475(1)035AS	1.7	6.0	2.5
6.8	D	T491D685(1)035AS	2.4	6.0	1.3
6.8	*C	T491C685(1)035AS	2.4	6.0	2.0
10.0	D	T491D106(1)035AS	3.5	6.0	1.0
#10.0	*C	T491C106(1)035AS	3.5	6.0	2.0
#10.0	*V	T491V106(1)035AS	3.5	6.0	2.0
15.0	X	T491X156(1)035AS	5.3	6.0	0.9
15.0	*D	T491D156(1)035AS	5.3	6.0	0.8
22.0	X	T491X226(1)035AS	7.7	6.0	0.7
#22.0	*D	T491D226(1)035AS	7.7	6.0	0.7
#33.0	*X	T491X336(1)035AS	11.6	6.0	0.6
#47.0	*X	T491X476(1)035AS	16.5	8.0	0.6
#47.0	*E	T491E476(1)035AS	16.5	10.0	0.5
50 Volt Rating at +85°C (33 Volt Rating at +125°C)					
0.10	A	T491A104(1)050AS	0.5	4.0	20.0
0.15	B	T491B154(1)050AS	0.5	4.0	16.0
0.15	*A	T491A154(1)050AS	0.5	4.0	19.0
0.22	B	T491B224(1)050AS	0.5	4.0	14.0
0.33	B	T491B334(1)050AS	0.5	4.0	10.0
0.47	C	T491C474(1)050AS	0.5	4.0	8.0
0.47	*B	T491B474(1)050AS	0.5	4.0	9.0
0.68	C	T491C684(1)050AS	0.5	4.0	7.0
0.68	*B	T491B684(1)050AS	0.5	4.0	8.0
1.0	C	T491C105(1)050AS	0.5	4.0	5.5
1.0	*V	T491V105(1)050AS	0.5	4.0	6.0
2.2	D	T491D225(1)050AS	1.1	6.0	2.5
2.2	*C	T491C225(1)050AS	1.1	6.0	3.5
3.3	D	T491D335(1)050AS	1.7	6.0	2.0
4.7	D	T491D475(1)050AS	2.4	6.0	1.5
6.8	X	T491X685(1)050AS	3.5	6.0	1.0
#6.8	*D	T491D685M050AS	3.4	6.0	1.0
#10.0	*X	T491X106M050AS	5.0	6.0	0.7
#15.0	*X	T491X156(1)050AS	7.5	8.0	0.7

*扩展容量

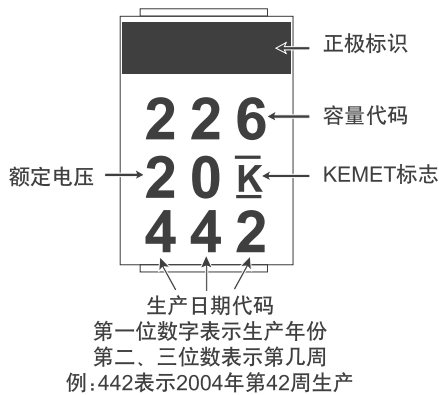
**6V等同于6.3V

(1)精度选择 K: ±10%, M: ±20%

#最大容量变化@125°C = ±15%

†最大容量变化@125°C = ±20%

电容本体标识



结构图

